

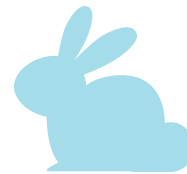
# Holiday Jump!



There are two days of the year that show a marked increase in the rate of LTC claims:  
**The Monday after Thanksgiving and the Monday after Easter.**



Families come home and check in with each other over the holidays.



Suddenly you notice Dad is a little less present and Mom left the oven on all day Friday.



LTC insurance offers a real solution to an everyday problem for millions of Americans.



You remember they have an LTC insurance policy and spring into action.

Make sure your family is protected with LTC insurance so you don't have to worry about the next step.

*Protect your retirement with long-term care insurance.*

**DIOLTC**  
INSURANCE SERVICES

di-ltc.com | 800.924.2294